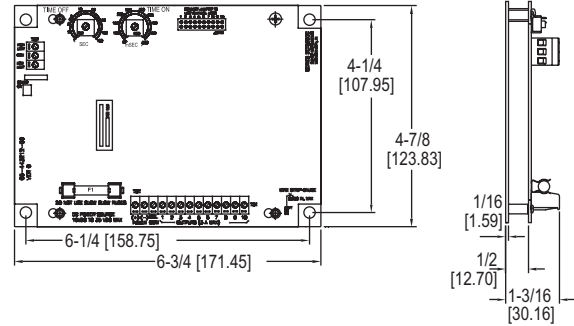
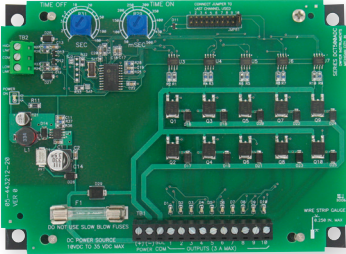


## SERIES DCT500ADC

# LOW COST TIMER CONTROLLER

## For Low Voltage Applications



The **Series DCT500ADC Low Cost Timer Controller** is designed to provide continuous or on-demand cleaning for 10-35 V powered receivers and pulse jet systems. It is available in either 4, 6, or 10 channels, and each unit is the same size, minimizing enclosure space and reducing overall system installation cost. For added safety, the control circuitry including the control inputs are isolated from the line voltage.

### FEATURES/BENEFITS

- Ideal for low voltage applications
- Simple and easy to use design
- Optional weatherproof enclosure available

### APPLICATIONS

- Dust collection
- Pneumatic conveying
- Cement batch plants

### MODEL CHART

Model	Description	No. of Channels
DCT504ADC	Timer controller	4
DCT506ADC	Timer controller	6
DCT510ADC	Timer controller	10

### SPECIFICATIONS\*

**Output Channels:** 4, 6, and 10 channels.

**Power Requirements:** 10-35 VDC.

**Power Consumption:** 0.6 W.

**Solenoid Supply:** 3 A max per channel.

**Fuse:** Type 3 AG, 3 A @ 250 VAC.

**Temperature Limits:** -40 to 140°F (-40 to 60°C).

**Storage Temperature Limits:** -40 to 176°F (-40 to 80°C).

**On Time:** 50 ms to 500 ms.

**On Time Accuracy:** ±10 ms.

**On Time Stability:** < ±1 ms.

**Off Time:** 1 s to 180 s.

**Off Time Accuracy:** ±5% of setting.

**Weight:** 9 oz (255 g).

**Agency Approvals:** CE.

\*Additional specifications on IOM.

### OPTIONS

To order add suffix:	Description
-L	Mounting bracket for field retrofits: 8-1/4" x 6-1/4" (209.55 mm x 158.75 mm)
-WP	Weatherproof housing: standard models Weatherproof housing: with option -L mounting bracket

